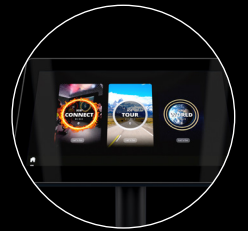


ICG CONNECT SYSTEM



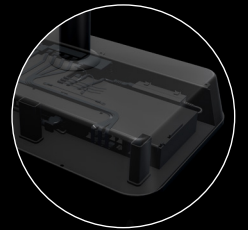
ADJUSTABLE VIEWING ANGLE



EASY PLUG AND PLAY



ENCASED ELECTRICAL COMPONENTS



MULTI-TOUCH 15.6" HD CAPACITIVE SCREEN



ICG CONNECT SYSTEM

INCLUDED APPLICATIONS



ICG® CONNECT RIDE



ICG® TOUR COACH



ICG® WORLD TOUR



SPECIFICATIONS

ASSEMBLED DIMENSIONS	53.5 x 36 x 116 CM / 22 x 14 x 46"
ASSEMBLED WEIGHT	23 KG / 51 LBS
OPERATING SYSTEM (OS)	ICG Customized Linux OS
COMPUTER	AMD Ryzen R1505 APU
ASPECT RATIO	16:9 (external screen)
SCREEN VIEWING POSITION	Adjustable - tilt & pivot (rotation)
INTERNET CONNECTIVITY	Wired, RJ45 LAN cable
SOFTWARE UPDATE	Wired internet / USB flash drive
USB 2.0	1
HDMI 1.3	1
AUDIO PORT	1 x 3.5mm input
ETHERNET PORTS (RJ45)	3
DISPLAY TYPE	15.6" touch screen
POWER REQUIREMENTS	110 - 220v AC input
LEVELLING FEET	2
TRANSPORT WHEELS	2
WARRANTY (PARTS)	1 Year

ICG CONNECT SYSTEM PACKAGE & STUDIO SETUP

HARDWARE	1 x ICG® Connect System 1 x 1.6 m/5 ft ICG® Connect System power cables for US, UK, AU and EU 2 x ANT Receiver (Receiver for ANT Data from IC5, IC6, IC7 Indoor Cycles & IC8 Power Trainer) 2 x CAT5 1 M/3 FT RJ45 network cables (testing ANT receiver connection only)
ADDITIONAL HARDWARE (NOT INCLUDED)	Full HD (1080p) TV or projector (The ICG® Connect System will not work for 720p devices) High-speed HDMI cable (Max length 10 m/32 ft) CAT 5 RJ45 network cables (Max length 50 m/164 ft)

