

CYBEX TECH TOOLS, TIPS & KITS

➤ Using the BootLoad program on a **Laptop without a serial Port**

Equipment Needed:

- Laptop
- RJ45 Cable
 - > USB to Serial Port Adapter



> Connector SK-17367



Installing USB to Serial Port Adapter:

Upgrading software on Cybex 750 Series product from a PC (desktop or laptop) requires 9 pin serial port connection. In order to connect the CSAFE/Serial port cable kit (SK-17367) to the Cybex Product, you will need to have a USB TO SERIAL PORT ADAPTER. This can be purchased at any electronics or computer store.

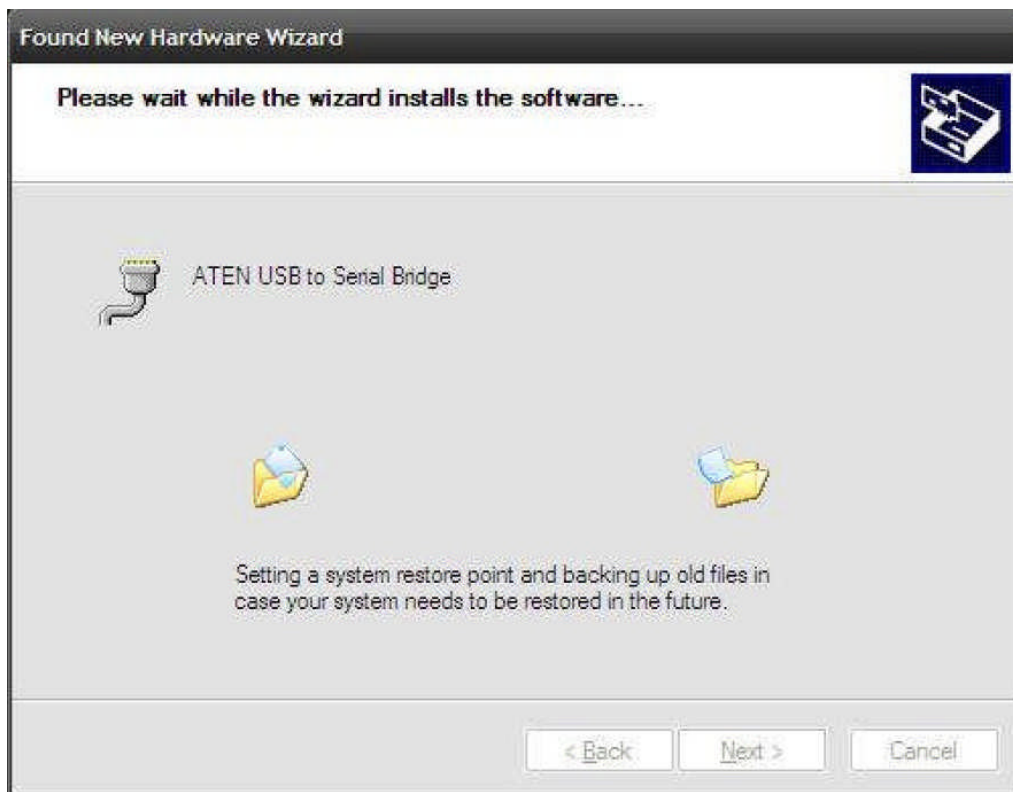
The CSAFE/Serial port cable kit will consist of the adaptor cable and a CD disk with the necessary drivers. Once the USB to Serial Port Adapter is connected to an open USB port on the computer:



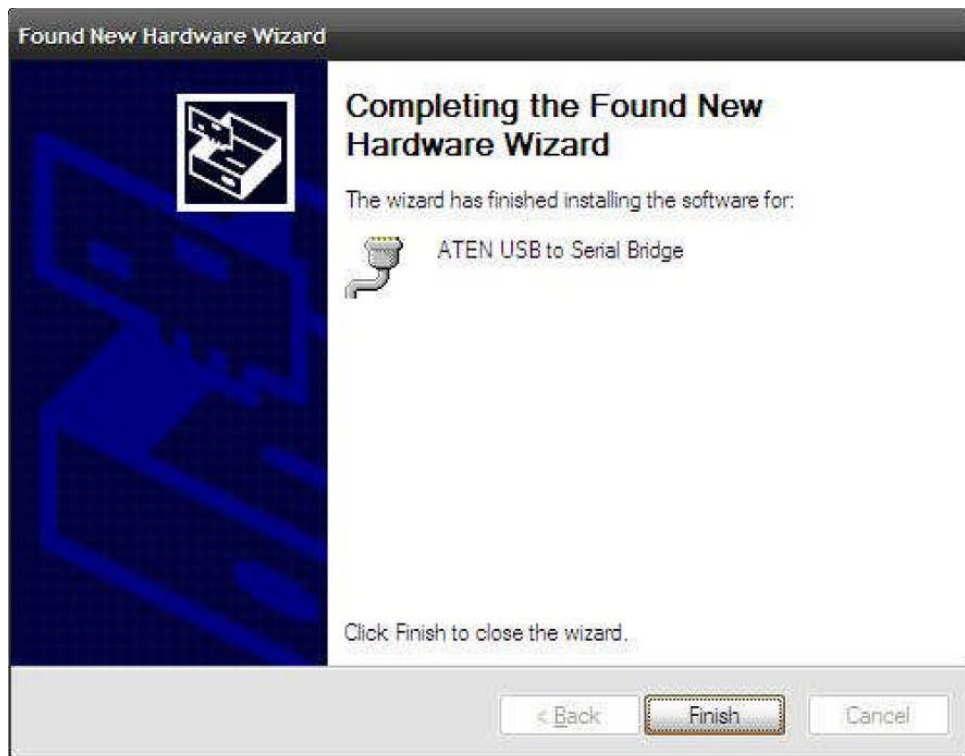
It will automatically recognize that a new device has been connected and will start an “Installation wizard”.



Once you press the “next” button, the wizard will locate the driver software and automatically install it. The screen should look like the picture below when the software is installing:



Once completed the following screen will be displayed:



Discovering the adapter's COM Port for use with Bootload Program:

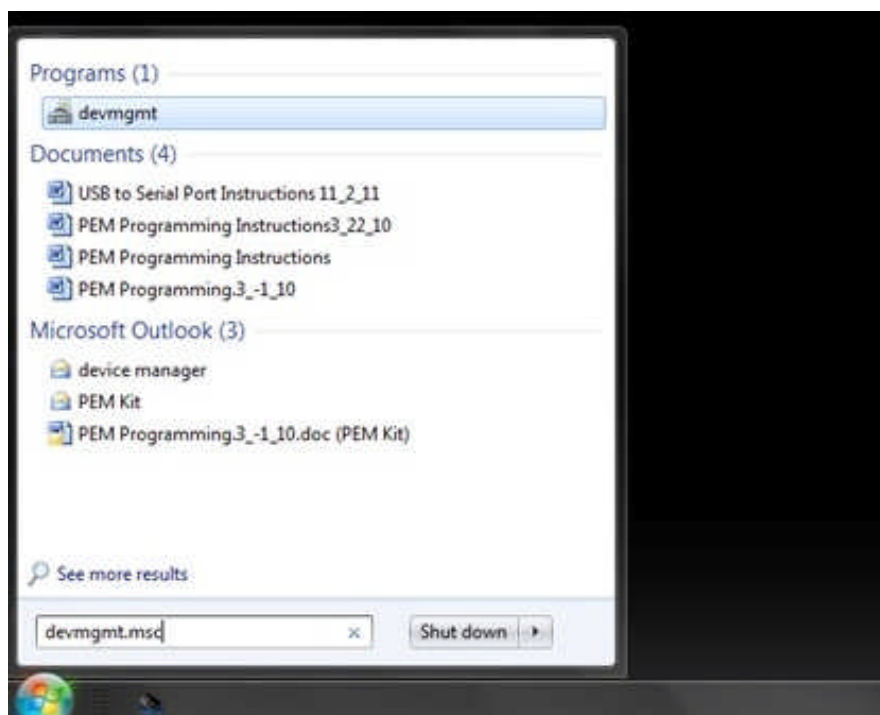
Once the serial port adapter is successfully installed you will need to know which COM port number is assigned to the adapter in order to connect to the Cybex equipment using the BootLoad program.

Step 1 –

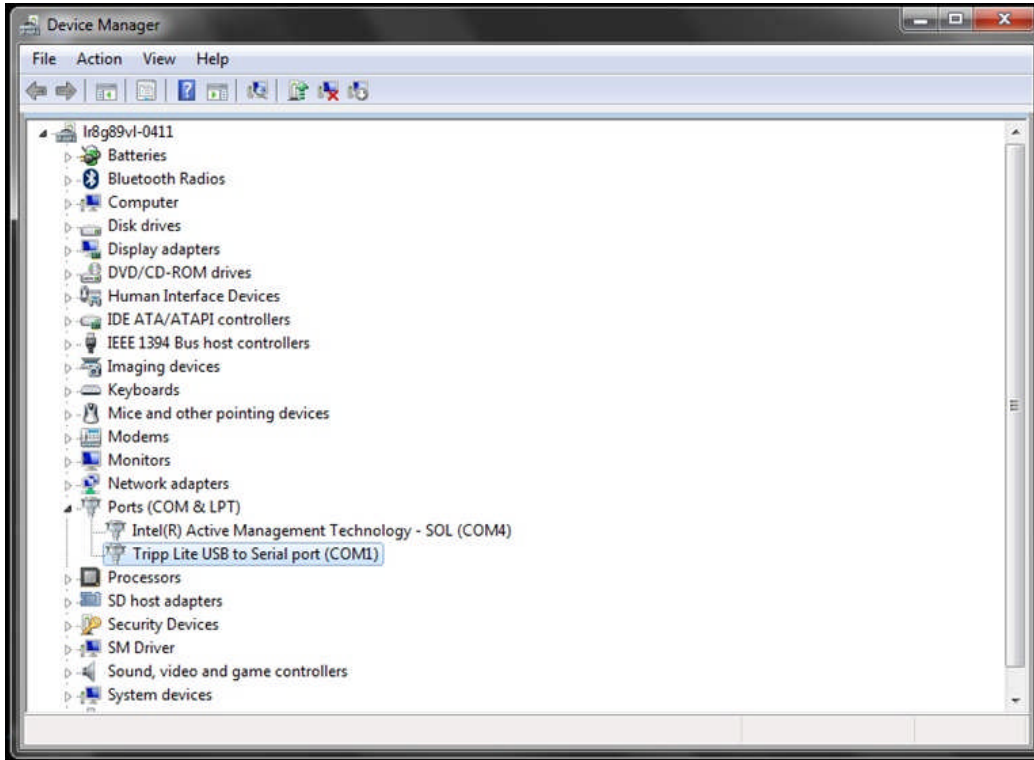
For XP and Vista: Select the **START** and then Select **“RUN”** from the menu

For WINDOWS 7: Select the **FLAG icon** on the lower left corner of your desktop screen. Select **“Search Programs & Files”**

Step 2 – Then type **‘devmgmt.msc’**:



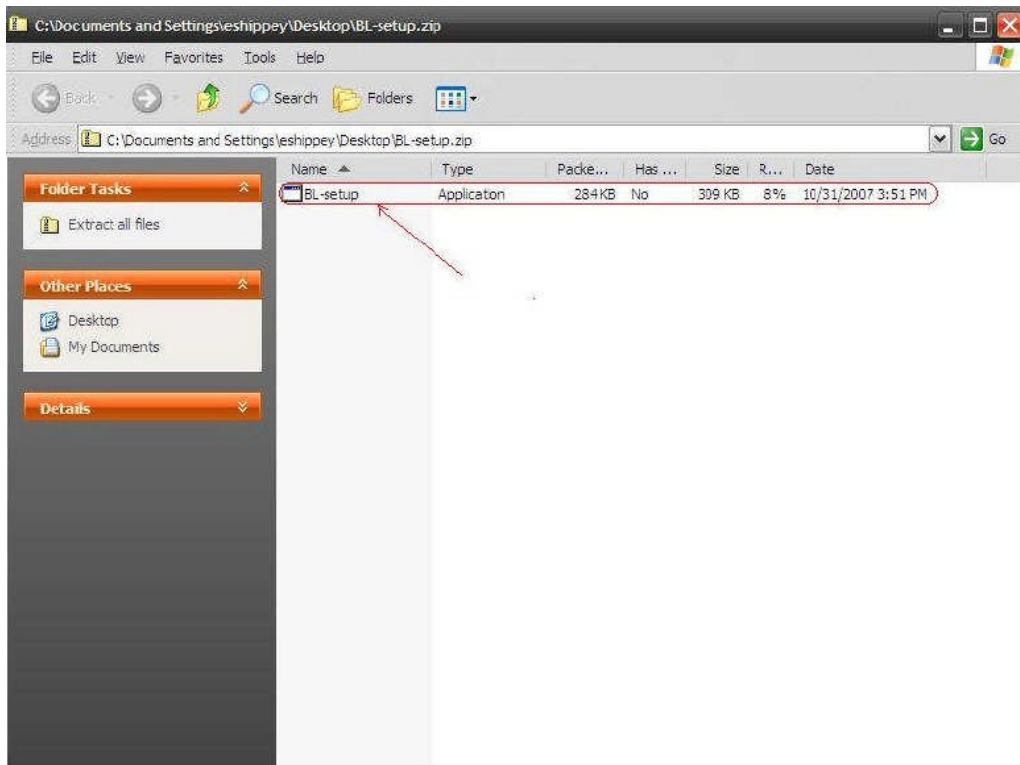
Step 3 – In the menu list, click on the “**Ports (COM & LPT)**” tab to open the selection. In the dropdown, you should be able to locate the serial adapter that was just installed. Note the COM number in parentheses. You will need this to select the proper port in BootLoad.



Installing the BootLoad Application

The BootLoad software application is sent or downloaded in a compressed file format (.zip file) the first step is to save the attachment to the computer, and clicking on the file icon which will open a file folder with the “BL-setup.exe” file in it.

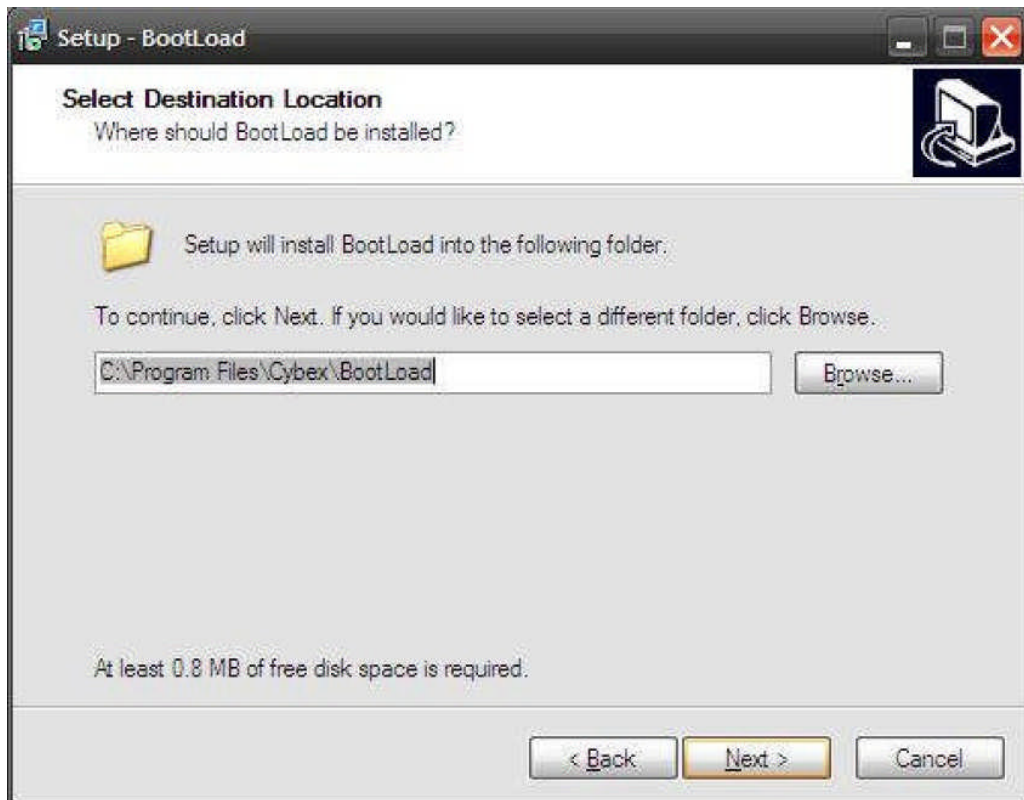
Step 1 - Click on the file to start the install:



Step 2 – The installation program will start- click on the “Next” button to start the install.



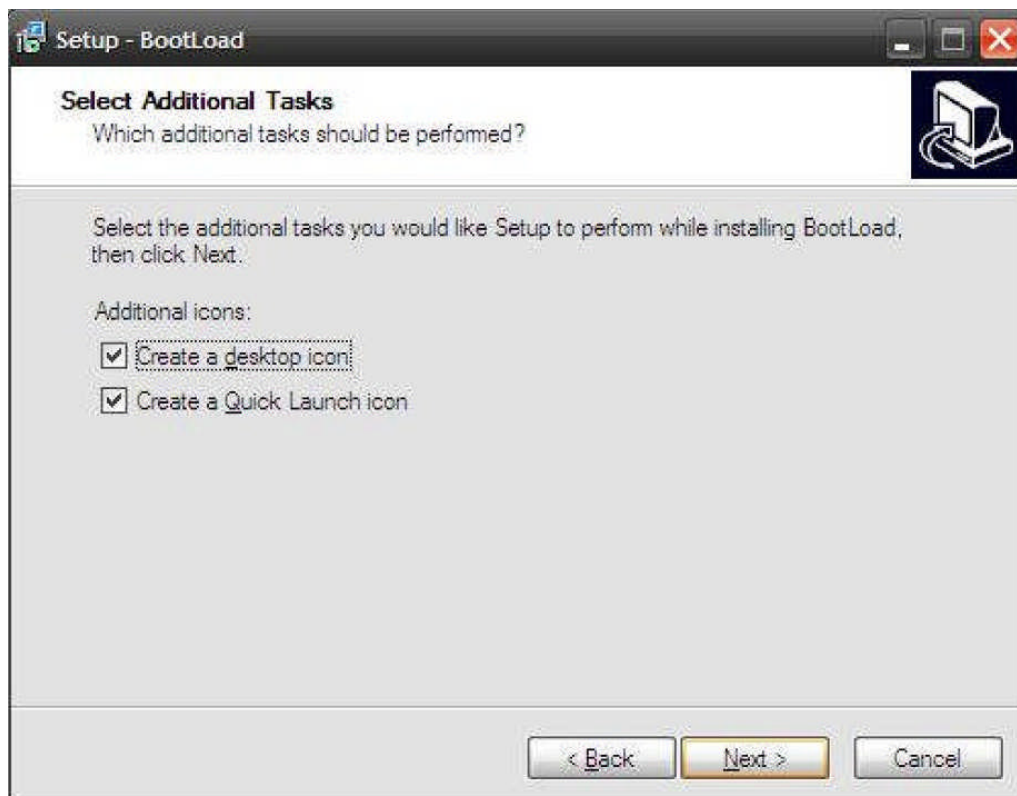
Step 3 – Verify the destination folder is correct (the program will create the folder unless you specify otherwise) and click the “Next” button.



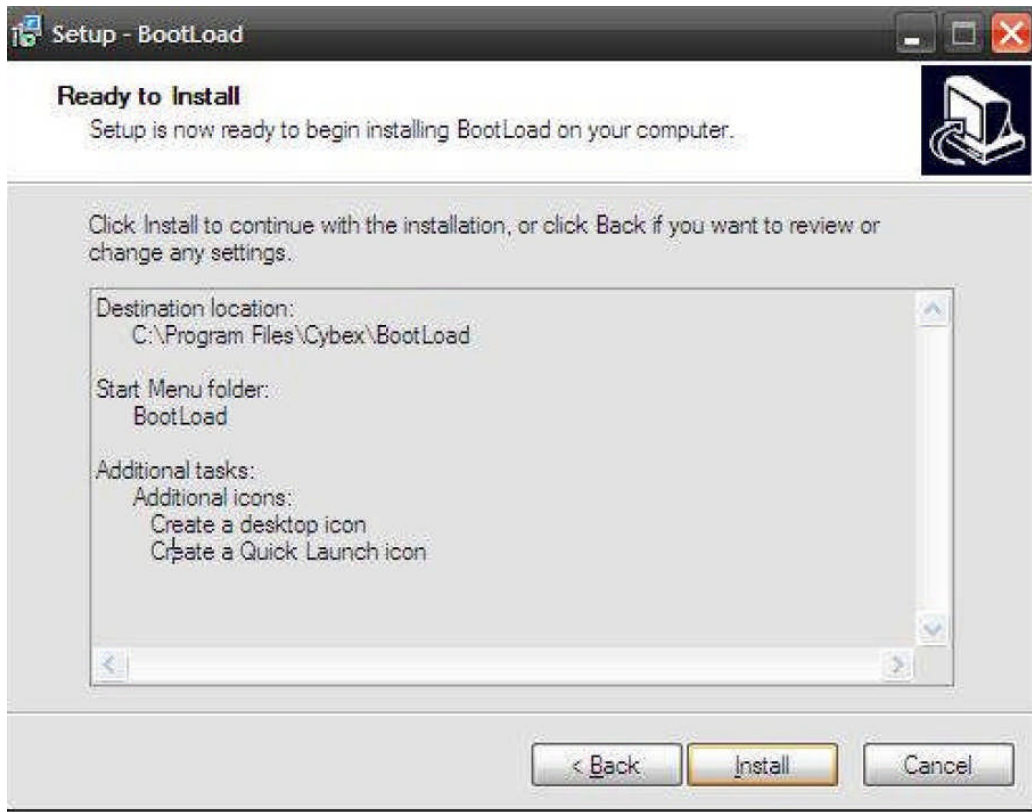
Step 4 – Verify the destination folder of the shortcuts- the program will create the BootLoad folder unless you specify otherwise. Then click the “**Next**” button to continue.



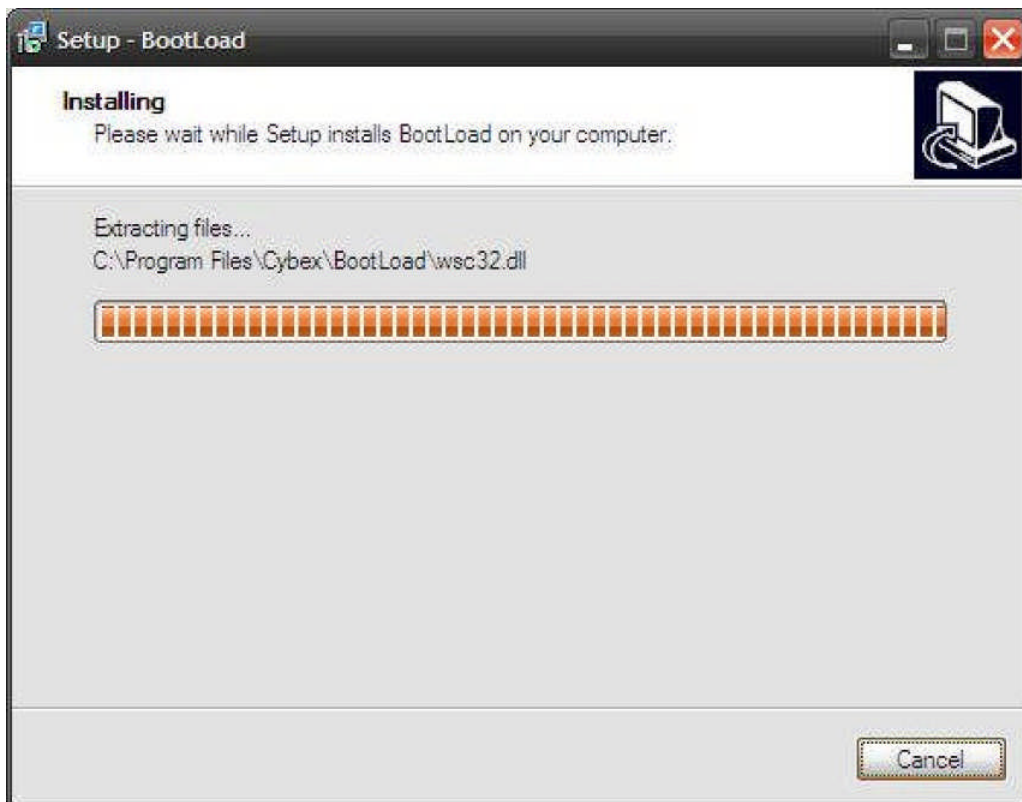
Step 5 – The install program will prompt you to select if you want shortcuts to the program on the desktop or in the Quick Launch menu. Select desired option and click “**Next**”



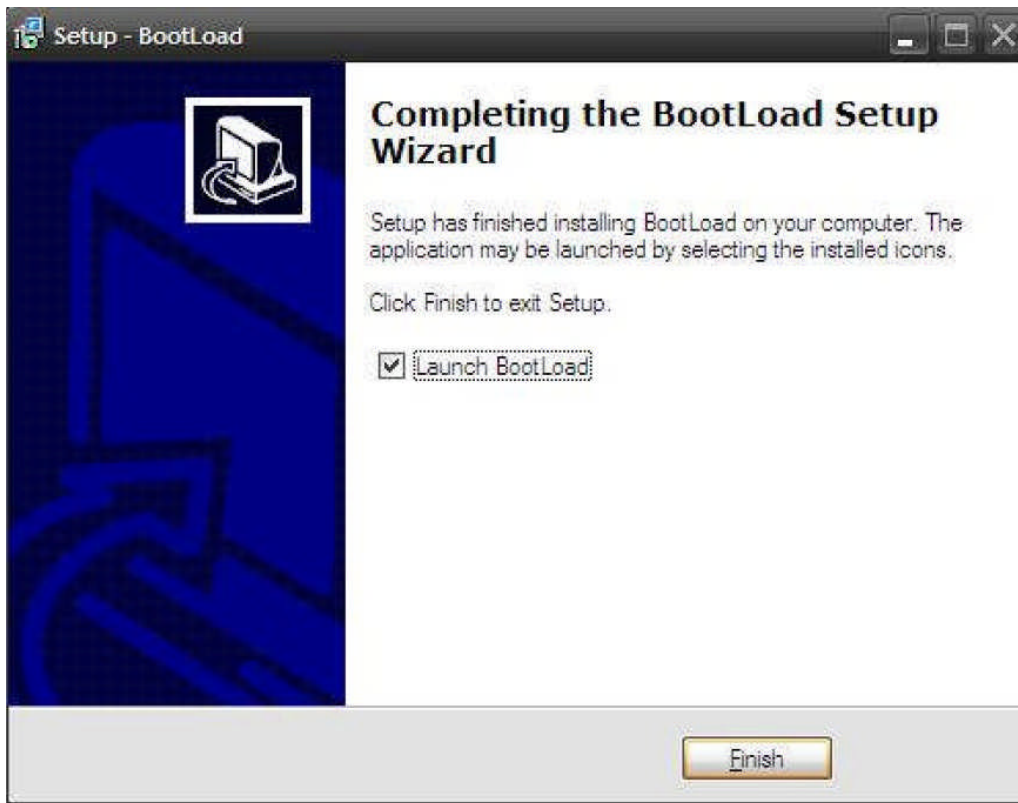
Step 6 – Verify all or the selected options and click the “Install” button.



Step 7 – The screen will display the progress of the install. No action is needed at this time.



Step 8 – The install should be completed. Click the “**Finish**” button to exit the install program. (To start the application upon exiting the installer, check the “Launch BootLoad” box.)



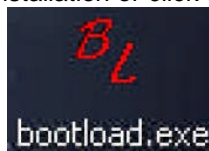
Running the BootLoad Application:

Turn OFF the 750T; Cycles and ARC consoles should be powered down. Connect the supplied cable between the Laptop 9 pin D connector on the rear and the RJ45 CSAFE port on the unit.

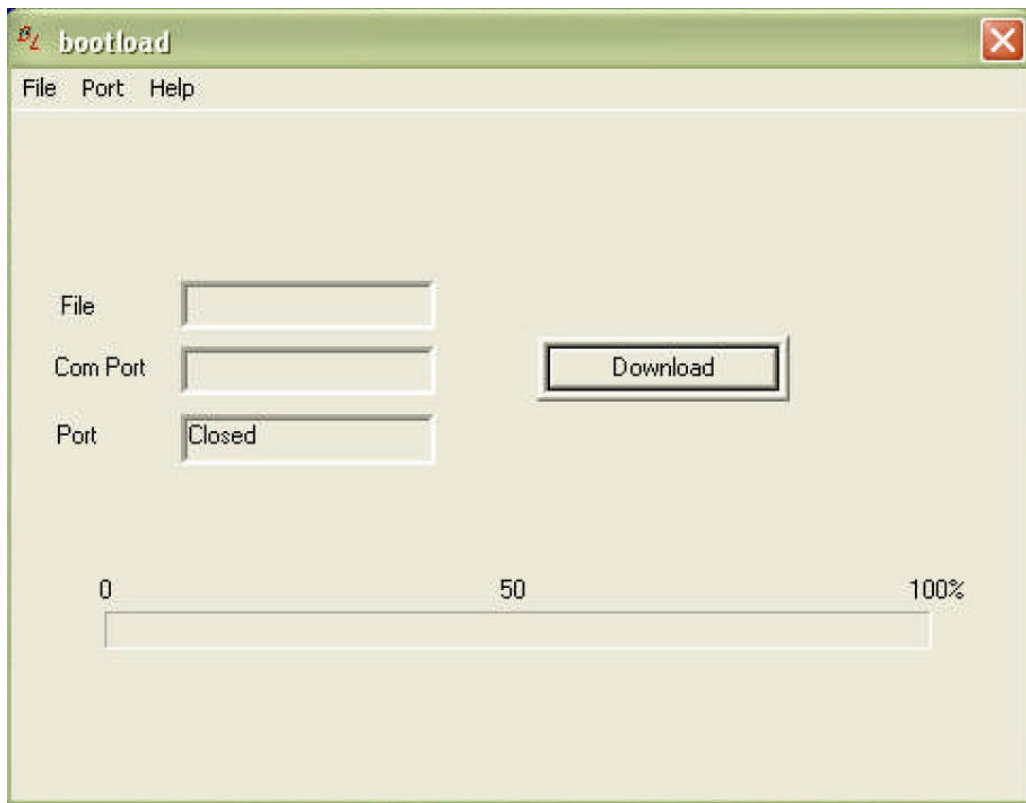
Note: 750T has two CSAFE ports, one located on the Hub board and is accessible from the bottom of the unit (see manual); the other is located on the back of the MCC (display board). The console back cover will need to be removed. 750A/AT/C & R only have one CSAFE port found on the back of the MCC display board. The console back cover will need to be removed.

All 750 MCC boards contain two (2) RJ45 ports one is the CSAFE port, the other is for A/V use. These are labeled on the board; most CSAFE ports are red in color. Selecting the wrong port will result in a failed software upload.

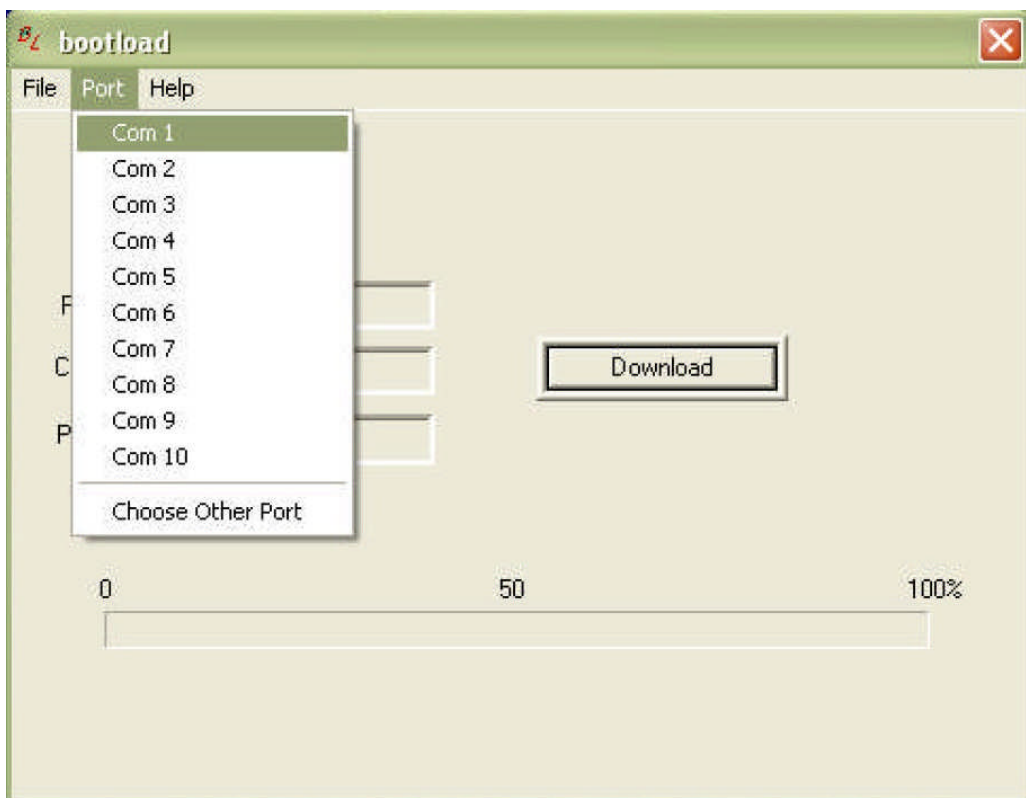
Either launch the BootLoad program after installation or click on 'BL' icon located on the desktop:



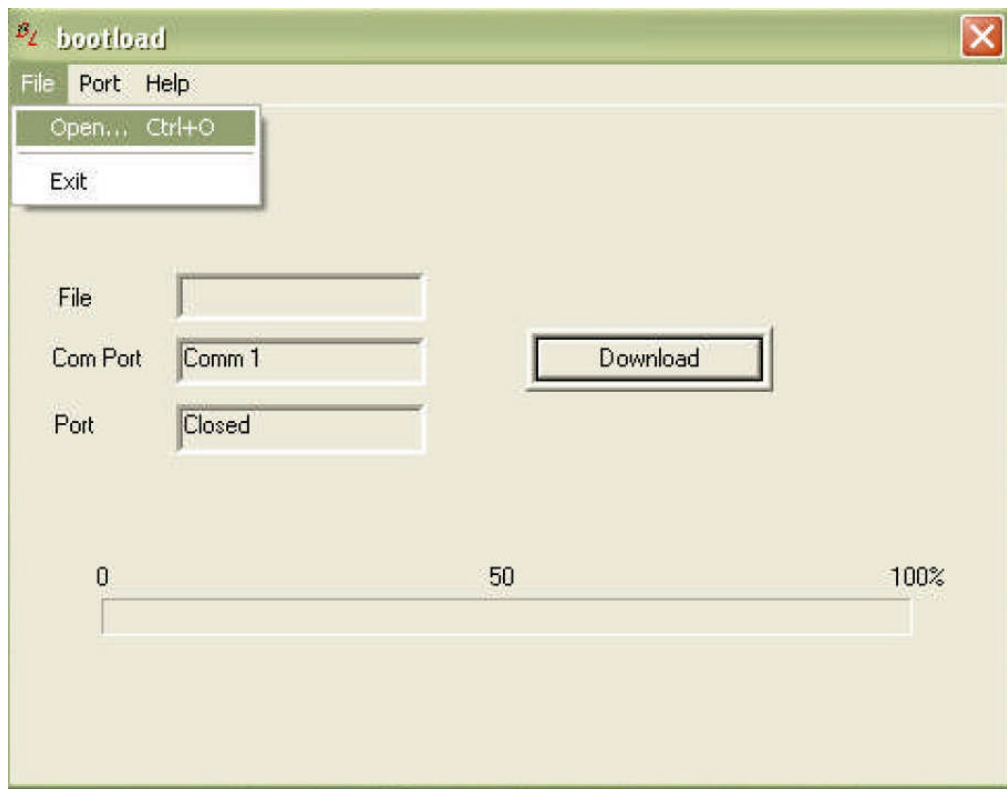
This will bring up the BootLoad application:



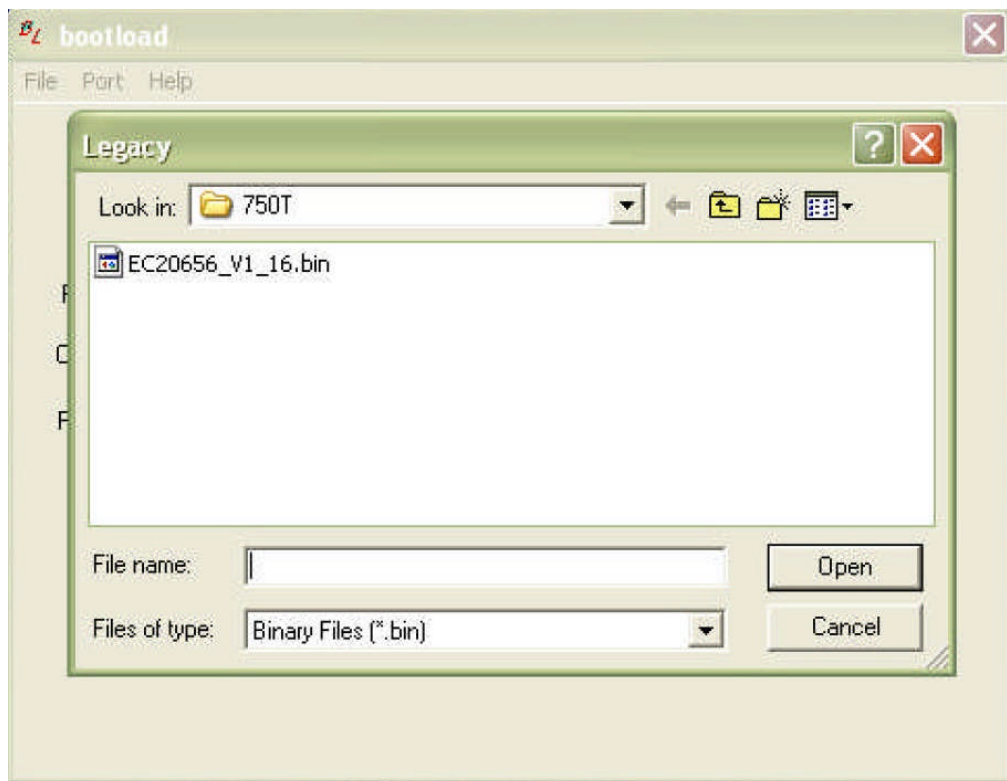
You must set the Com Port to COM 1. Click on the 'Port' menu and select COM 1:



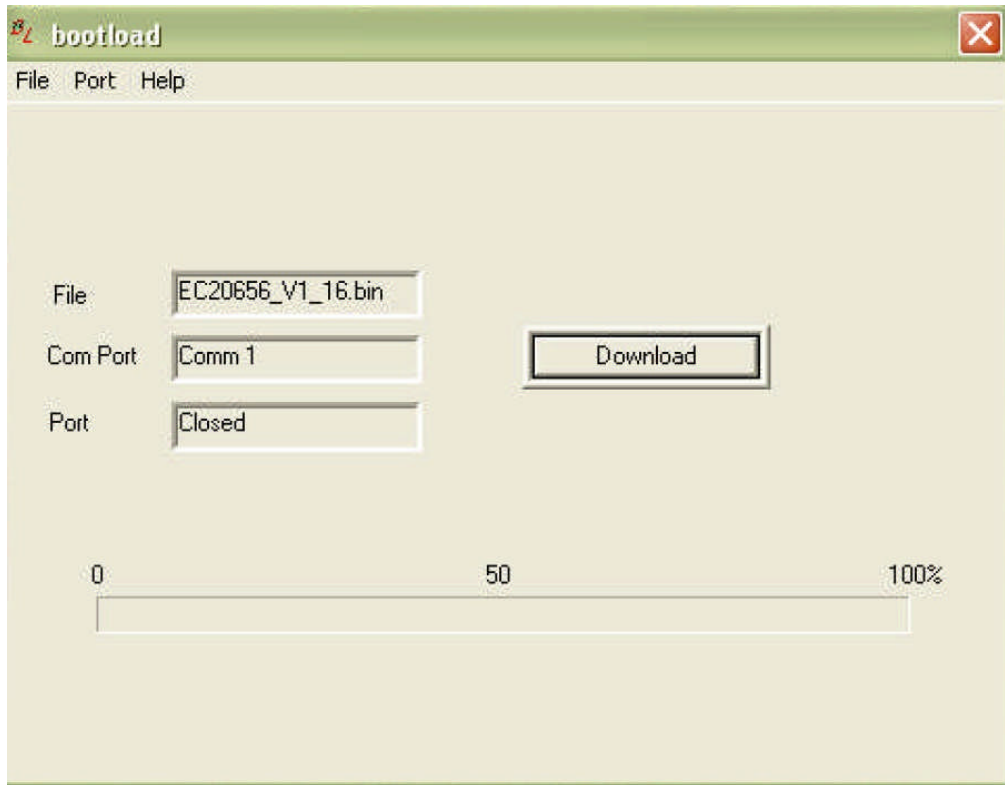
Next you will need to select the code file to load. Click on File > Open:



Now navigate to 'C:\CODE\750T' and chose the file 'EC20656_v1_16.bin'



At this point you should see the following on your screen.



Click on the 'Download' button, then turn power 'ON' to the 750T, for Cycles and Arc's, begin pedaling.

The Port display will change to 'Open' and within a few seconds up to a minute you will see the progress bar moving. When the download is complete the port display will change back to Closed.

Turn off power to the 750T or stop pedaling on Cycles or Arc's, remove the programming cable. After the unit has completely powered down, turn it back on the 750T display will show the updated version software. To confirm the software change on Cycles and Arc's it will be necessary to access the Diagnostic menu ('CLEAR' -8,-8,-8- 'ENTER')

A. **Step 1** - LED test: Auto test, Press STOP to exit.

- Automatically cycles through all main displays once pausing for 3 seconds on each, automatically moves on to Step 2.

B. **Step 2** - Keypad test: Press STOP to exit.

C. **Step 3** - Static Indicators of I/O: Press STOP to exit.

- SHIFT/SCAN key displays the model and Software Revision

Clearing the errors (this must be done each time a unit is reprogrammed)

Enter the diagnostic utility by pressing 'CLEAR' - '9' - '9' - 'ENTER'

Use the Speed + key until the display shows 'ERRORS', press 'ENTER'

Press and hold the 'CLEAR' key until the display shows 'NO ERRORS', this takes about 4 seconds.

Press 'ENTER' and 'CLEAR' to exit the diagnostics.

The procedure is now complete.

LOADING ERRORS

Error 2: COM Port already open – another program is using the com port. This also sometimes happens when a badly written program does not close the com port on exit.

Error 304: File not found or bad. May be the result of typing in the file name incorrectly or the file did not get copied to the computer properly.

Error 310: Communication not established. The most common cause is starting the target unit and then starting the download after the window for downloading has passed. This is a failure to establish communication with the target.

Error 313: Communication had been established but was interrupted. This may be caused by noisy transmission or marginal equipment (such as a USB to Serial adapter that does not operate reliably).